

Injection Date : Tue, 10. Oct. 2023 Seq Line : 22
Location : 15
Inj. Vol. : 2 µl

Acq. Method : C:\Users\Public\Documents\ChemStation\1\Data\SE10OCT 2023-10-10
08-36-32\22010446C LCMS-6#.M

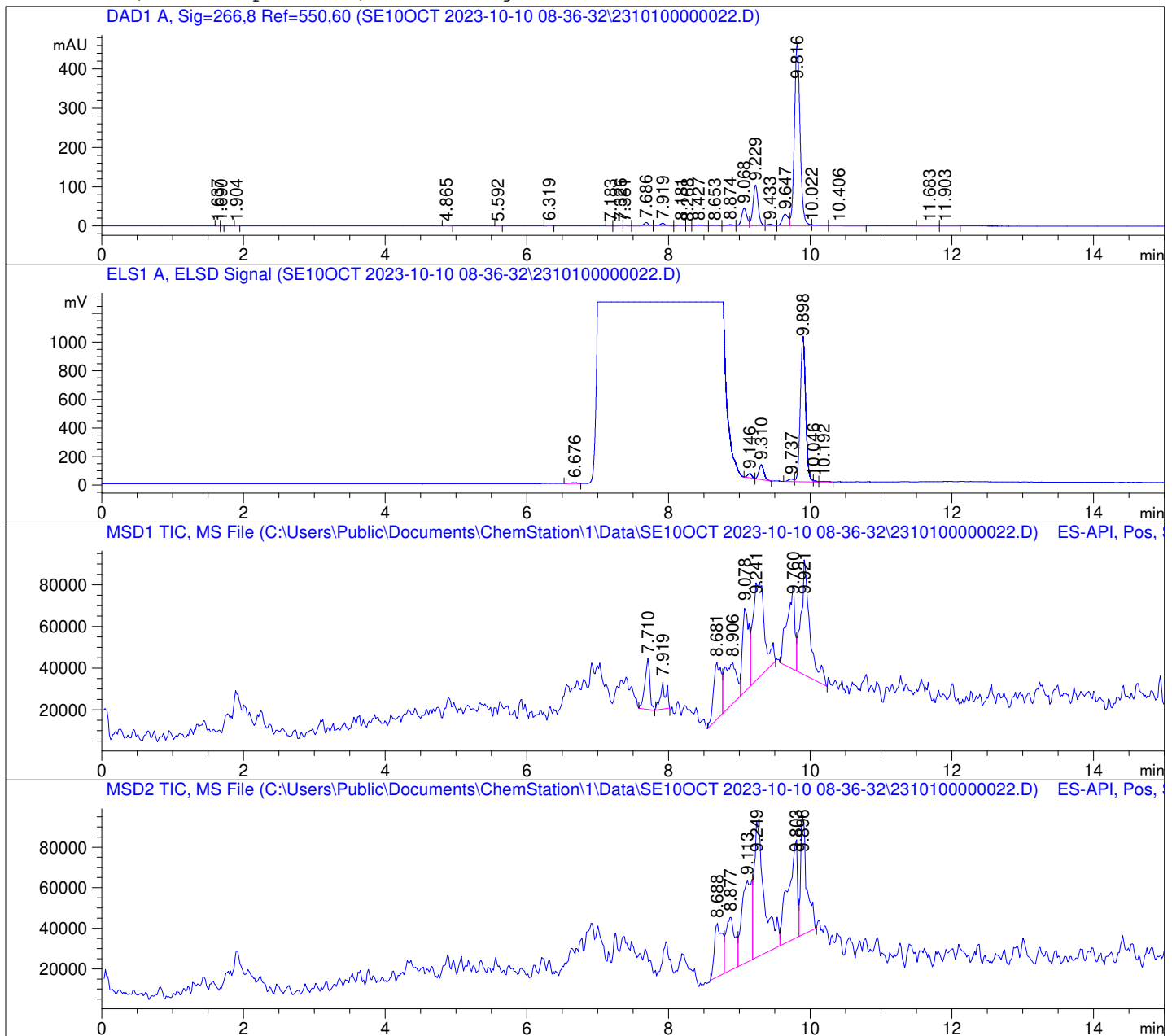
Analysis Method : C:\Users\Public\Documents\ChemStation\1\Data\SE10OCT 2023-10-10
08-36-32\22010446C LCMS-6#.M (Sequence Method)

Waters XBridge BEH Amide (4.6 x 150 mm, 2.5 µm); PN# 186006726

Mobile Phase A: 20mM Ammonium Acetate (aq) pH 8.2

Mobile Phase B: AcN

Mobile Phase A / Mobile Phase B: 5/95 (0 min) --> (10 min) --> 60/40 (5 min); Flow:
1.0 ml/min; MSD1 = positive; MSD2 = negative



DAD1 A, Sig=266,8 Ref=550,60

Peak #	Ret. Time [min]	Area [mV *s]	Area %
1	1.637	0.281	0.008
2	1.690	0.172	0.005
3	1.904	0.230	0.006
4	4.865	2.117	0.057
5	5.592	0.572	0.015
6	6.319	3.748	0.100
7	7.183	0.314	0.008
8	7.326	3.187	0.085
9	7.381	2.920	0.078
10	7.686	40.366	1.079
11	7.919	37.157	0.993
12	8.181	10.031	0.268
13	8.268	3.818	0.102
14	8.427	18.076	0.483
15	8.653	10.420	0.278
16	8.874	20.829	0.557
17	9.068	233.981	6.252
18	9.229	529.875	14.157
19	9.433	27.967	0.747
20	9.647	179.964	4.808
21	9.816	2584.500	69.054
22	10.022	19.969	0.534
23	10.406	9.857	0.263
24	11.683	1.416	0.038
25	11.903	0.972	0.026

ELS1 A, ELSD Signal

Peak #	Ret. Time [min]	Area [mV *s]	Area %
1	6.676	42.620	0.694
2	9.146	124.730	2.030
3	9.310	504.096	8.205
4	9.737	97.254	1.583
5	9.898	5316.391	86.532
6	10.046	23.156	0.377
7	10.192	35.578	0.579

